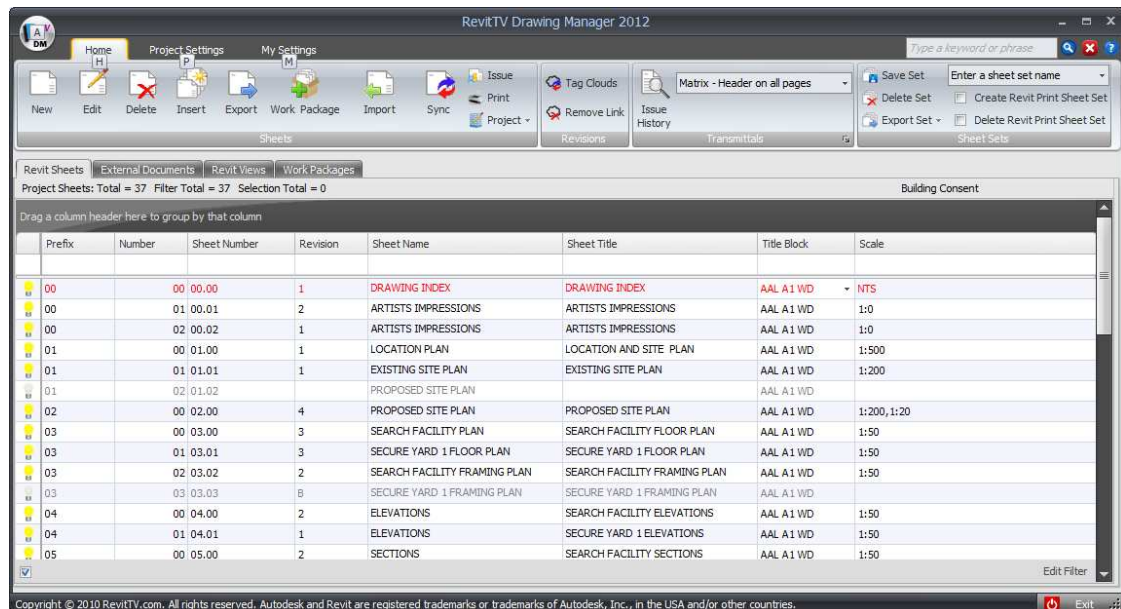


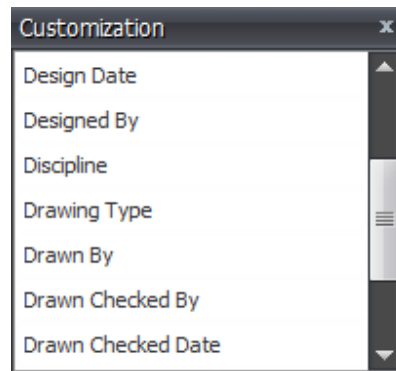
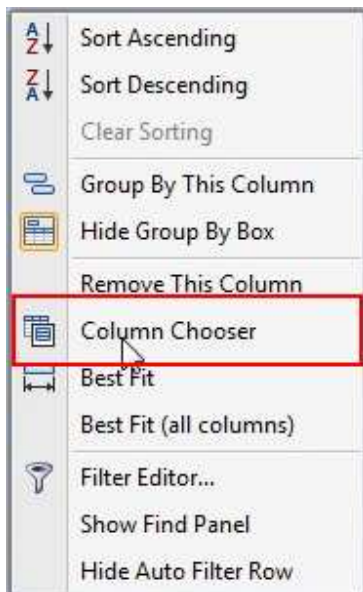
RevitTV Drawing Manager 2012

New Features Guide



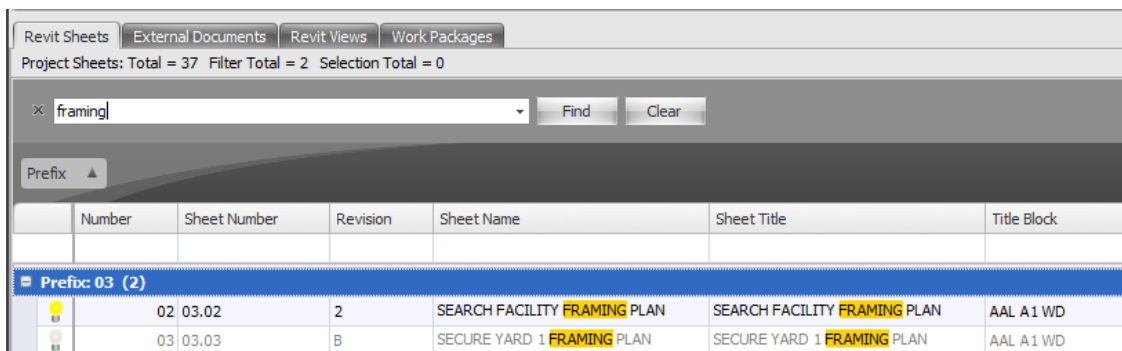
Column Chooser

You can right click over the column header section and select Column Chooser to display the customization window. Double click on the columns from the Customization window you need to display on the main Drawing Manager interface.



Find Panel

Right click over the column header section and select Show Find Panel to add the Find Panel to the main interface. Enter search text in the Find Panel and Drawing Manager will filter across all columns and highlight the text.



New Sheet

Additional parameters have been added to the Sheet Information form:

- Discipline
- Drawing Type
- Level
- Sector

Discipline, Drawing Type, Level, and Sector parameters dynamically display existing project values in the list.

Inherit values from selected sheet option has been updated, to display the following values on the new sheet form:

- Discipline
- Drawing Type
- Building Zone
- Design Scheme
- Level
- Sector

Sheet Information

Additional parameters have been added to the Sheet Information form:

- Drawn Checked By
- Drawn Checked Date
- Discipline
- Drawing Type
- Level
- Sector
- Percent Complete

Discipline and Drawing Type parameters dynamically display existing project values in the list.

Revisions

The Revision layout has been revised so Revisions are grouped within a tab page and now revision data is entered directly into the data grid. Revision columns layout is defined in the titleblock configuration.

Display

A new Display tab page lists the Yes / No Visibility parameters associated with the title block family on the sheet. You can set the values of these visibility parameters within Drawing Manager on a per sheet basis. The values of these parameters can be saved and restored for further use on other sheets. The parameter list will refresh if you can the sheet size value.

Edit Multiple Sheets

Additional parameters have been added to the Sheet Information form:

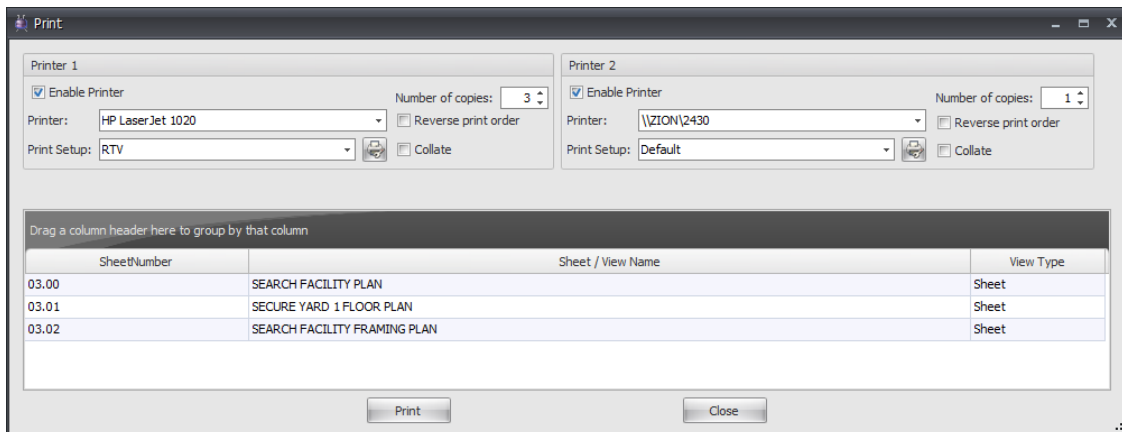
- Drawn Checked By
- Drawn Checked Date
- Discipline
- Drawing Type
- Level
- Sector
- Percent Complete

Export Metadata to XLS

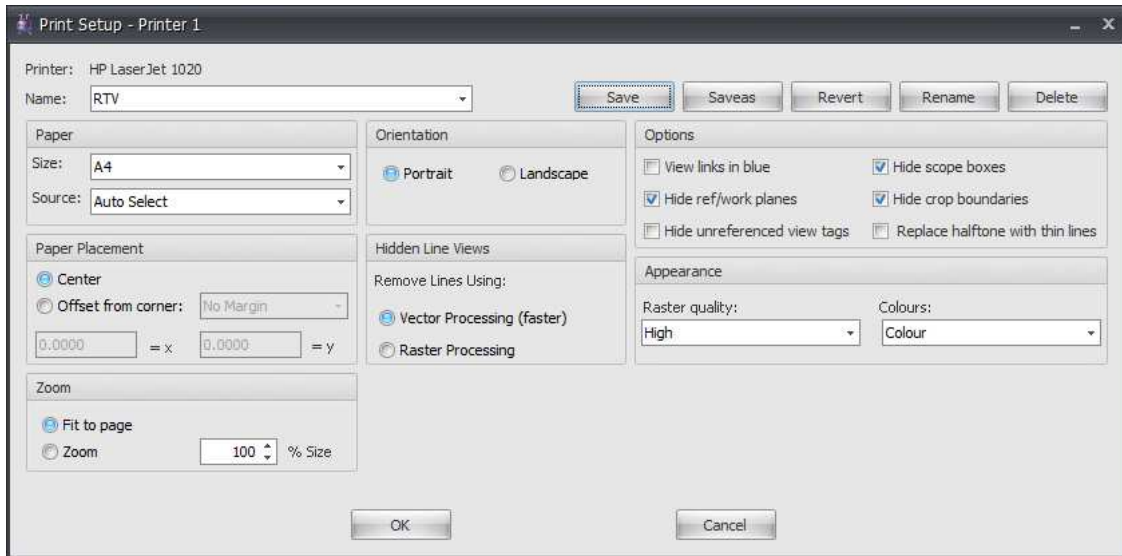
Main interface right click menu now features an Export Metadata to XLS option that will export the currently displayed Drawing Manager sheet metadata to a Microsoft Excel xls file.

Print

The ability to print sheets to two defined printers has now been included into Drawing Manager 2012.



Define and restore plot settings.



Issue Contacts – Link to Synergy SQL database

Drawing Manager now includes a lookup link to Synergy SQL database to retrieve project related contacts.

A Synergy.cfg xml file configures the link:

```
<?xml version="1.0" encoding="utf-8" standalone="yes"?>
<!--Synergy Connection Config 20/11/2010-->
<SynergyConfig>
  <Server>GDLLAP03\SQLEXPRESS</Server>
  <Database>Synergy</Database>
</SynergyConfig>
```

Issue Contacts – Outlook Contacts

Retrieve contacts from local Microsoft Outlook contacts list.

Issue Transmittal Reports

User can now define and edit a transmittal report's sub reports with the new Report Designer.

A new transmittal template style Simple No Distribution has been included for our Scandinavian clients.

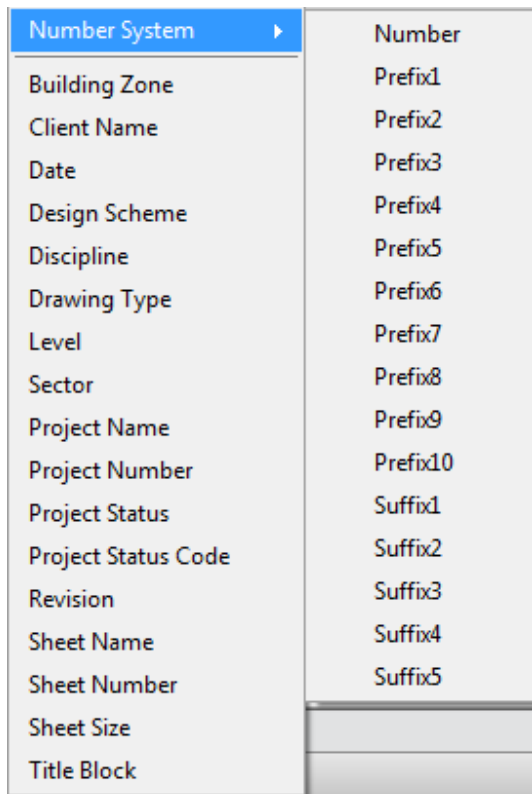
Option to background colour fill the last issue column in Matrix based reports is now included. Using report scripting code users can also background colour fill rows based upon a criteria.

Export

New options to export data to DXF and IFC formats are now included.

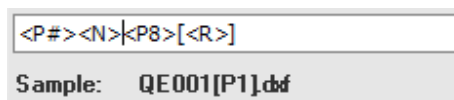
Sheet metadata included during export is now a new option. An associated xml file is created for each exported sheet. A translation file can also be define to translate Drawing Manager columns name to a user define column name.

The export file name template text box now features a right click context menu listing the format codes. Format codes are now inserted at the cursor location within the content of the export file name template text box. Previously format codes were appended to the end of the content.



Number System	Number
Building Zone	Prefix1
Client Name	Prefix2
Date	Prefix3
Design Scheme	Prefix4
Discipline	Prefix5
Drawing Type	Prefix6
Level	Prefix7
Sector	Prefix8
Project Name	Prefix9
Project Number	Prefix10
Project Status	Suffix1
Project Status Code	Suffix2
Revision	Suffix3
Sheet Name	Suffix4
Sheet Number	Suffix5
Sheet Size	
Title Block	

Double clicking on a format code in the list box will automatically add the code to the file name template edit box.



Support for Bluebeam PDF printer during export.

Cancel button now displays on Drawing Manager status bar during export.

Project Config

Data is now entered directly into the data grid, where previously data was entered into an edit box. A new Import button allows users to import associated data from other Drawing Manager projects or templates:

- Numbering format column lookups
- Parameters – Custom Parameter mapping
- Titleblock Configuration
- Revision Stamp
- Issue Stamp
- Project Status
- Document Type
- Transmittal Method
- Document Status
- Issue Format

Parameters

A shared parameter file can now be associated with a Drawing Manager project using the 'Define SPF' button.

Titleblock Duplicate

New option to duplicate the currently selected title block. Default RTV_A1 titleblock can be deleted if other titleblock configuration settings exist in the project.

Titleblock Settings

The Titleblock Settings form has been revised to include a tab page grouping all the parameters for the Revision schedule together. A Display tab page lists the Visibility and View Scale parameters.

Users have the option to exclude a visibility yes/no parameter from showing on the sheet information Display tab page.

Users can control the multiple scale display order on a sheet, either ascending (1:10, 1:50) or descending (1:50, 1:10).

Revit View - View Sets

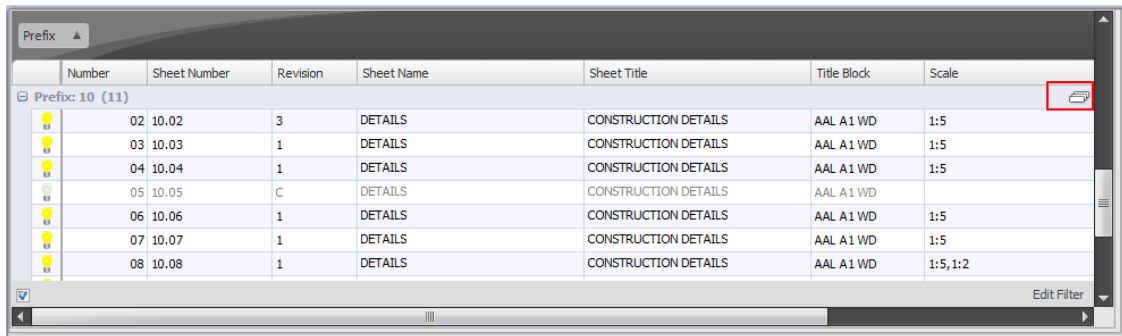
Revit views now include view set options similar to Revit Sheet set options, Save, Restore, Delete, Import, and Export.

Sheet - View Sets

When sheet view sets are restored the current selection total is updated.

My Settings – Allow Fixed Group Rows

When checked the top visible group row is anchored to the top of the grid while scrolling through grouped data. In addition, a special icon is displayed to indicate that grouped data is partially visible:



Incremental Search Support in Column Filter Dropdowns

You can now use the incremental search feature to locate values in dropdown lists. Simply enter the required value in order to locate it in the list. When typing, the text is highlighted in the list making it easy to locate:

