

RevitTV Drawing Manager – Quick Start Reference

This document will guide you through the features and basic use of the RevitTV Drawing Manager plug-in for Autodesk® Revit®.

After installing the Drawing Manager plug-in you open the Drawing Manager from within Autodesk® Revit® from the “Add-Ins” tab on the Revit® “ribbon” toolbar. (fig 2.0)

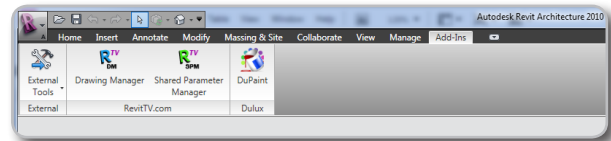


fig 2.0

Start the Drawing Manager by clicking on the Drawing Manager icon.

The first time the Drawing Manager is started you will be prompted to select an initial database format or template to use on your project. (fig 2.1)

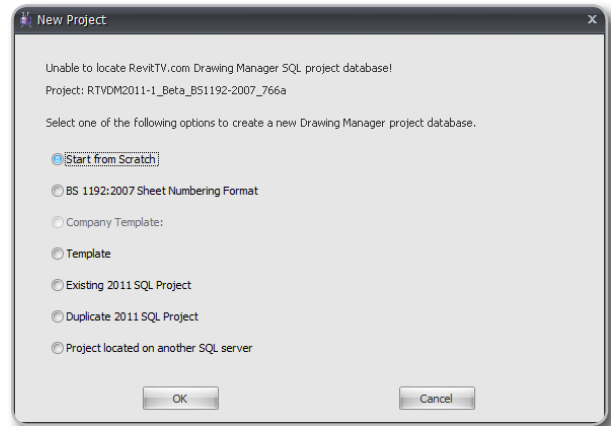


fig 2.1

Select the desired database format and click OK to create your initial database.

After the initial database has been created the main Drawing Manager interface will be displayed. (fig 2.2)

The main interface is split into four main sections or tabs:

- Revit Sheets: create, edit, modify and issue drawing sheets in Autodesk® Revit®.
- External Documents: create, edit, modify and issue documents not stored in Autodesk® Revit®.
- Revit Views: batch exporting of saved Views currently stored in Autodesk® Revit®.
- Work Packages: issue multiple drawing sheets and external documents as a single Work Package and track their revision history.

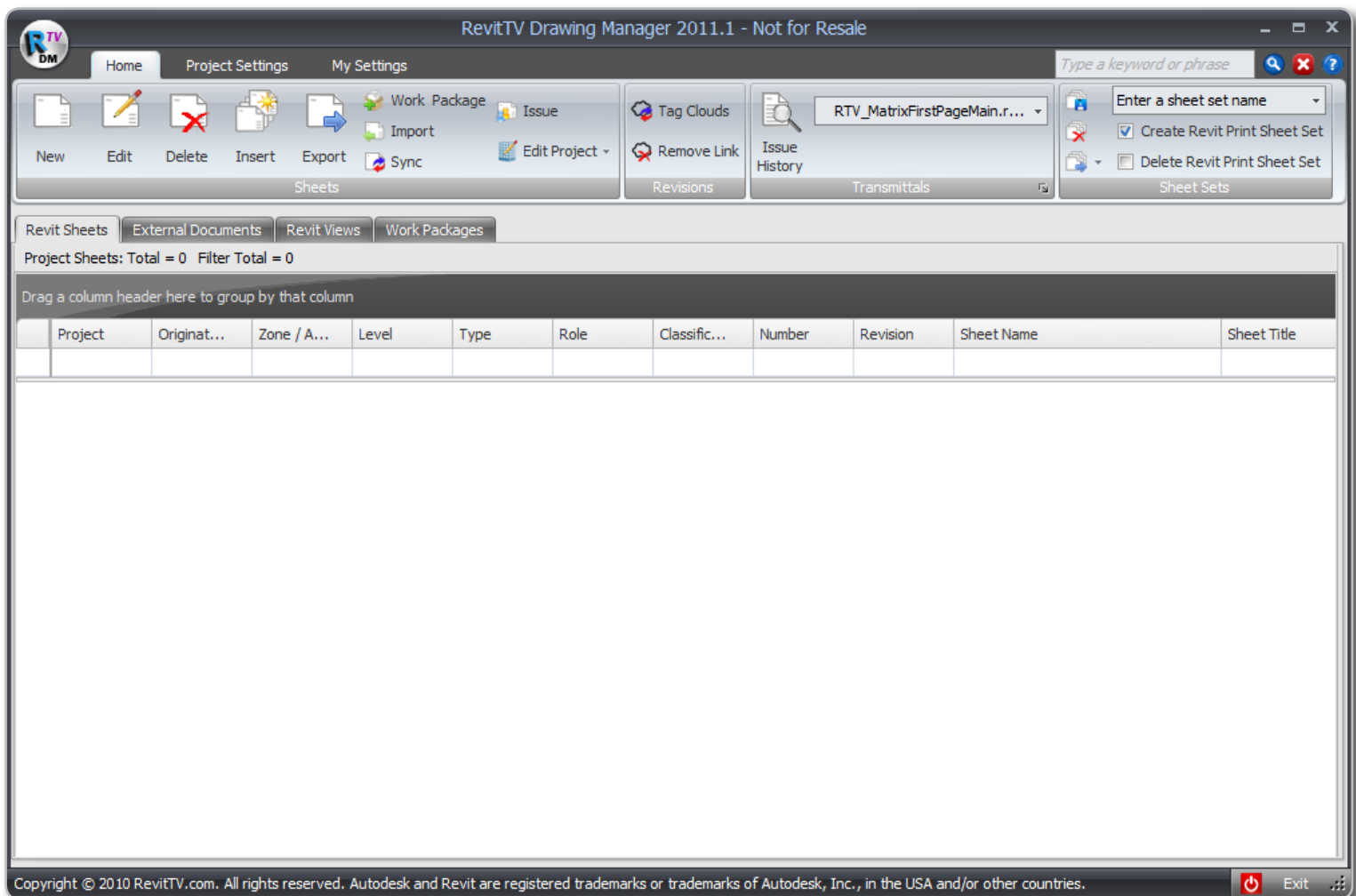


fig 2.2

RevitTV Drawing Manager – Quick Start Reference

The main Ribbon Toolbar of the Drawing Manager is split into three main sections or tabs: (fig 2.3)

- Home: the tools on the Home Ribbon change to reflect the features available or each of the four main functions of the Drawing Manager i.e. Revit Sheets, External Documents, Revit Views and Work Packages. (fig 2.4)
- Project Settings: create, edit, modify and issue documents not stored in Autodesk® Revit®. (fig 2.5)
- My Settings: set and save user defined configuration options such as Force UPPERCASE, check for updates on startup and automatic drawing sheet syncing features. (fig 2.6)

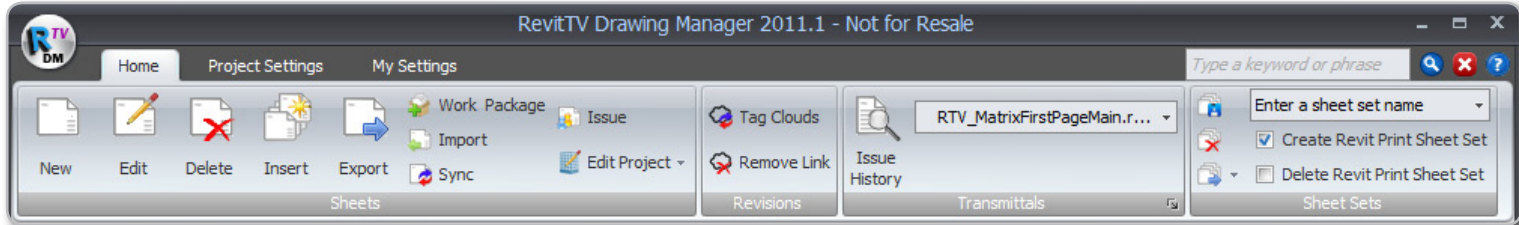


fig 2.3

Using the tools on the main Home Toolbar you can create, edit, delete, export, sync and issue Drawing Sheets, External Documents and Work Packages.

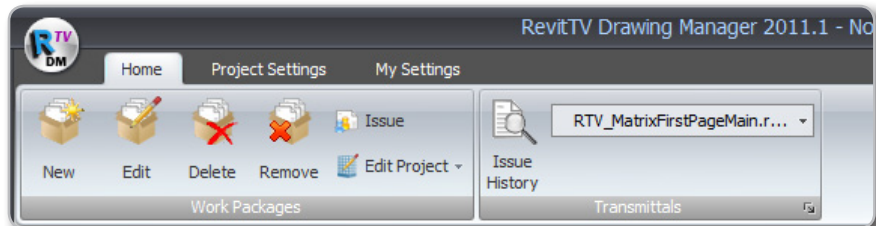
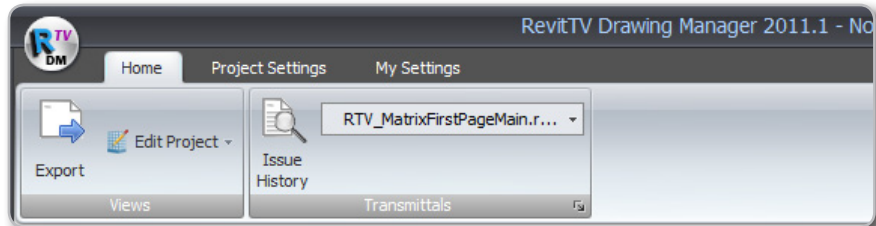
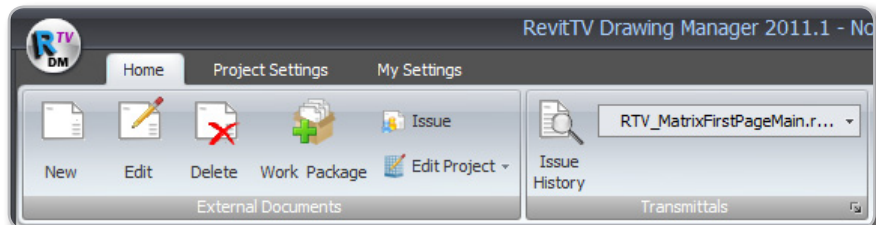


fig 2.4

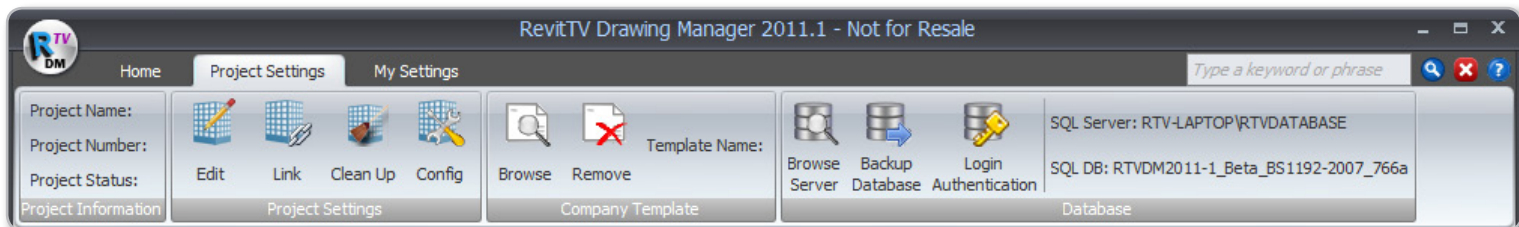


fig 2.5

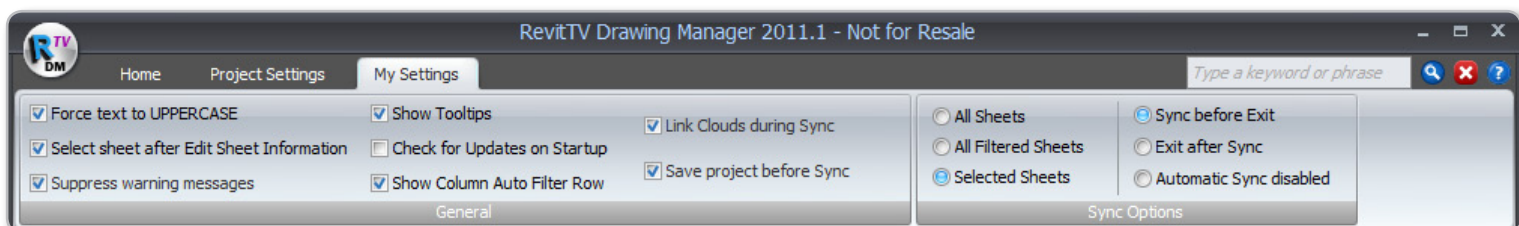


fig 2.6