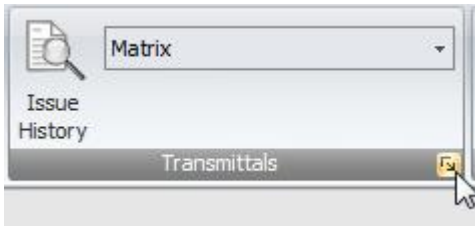


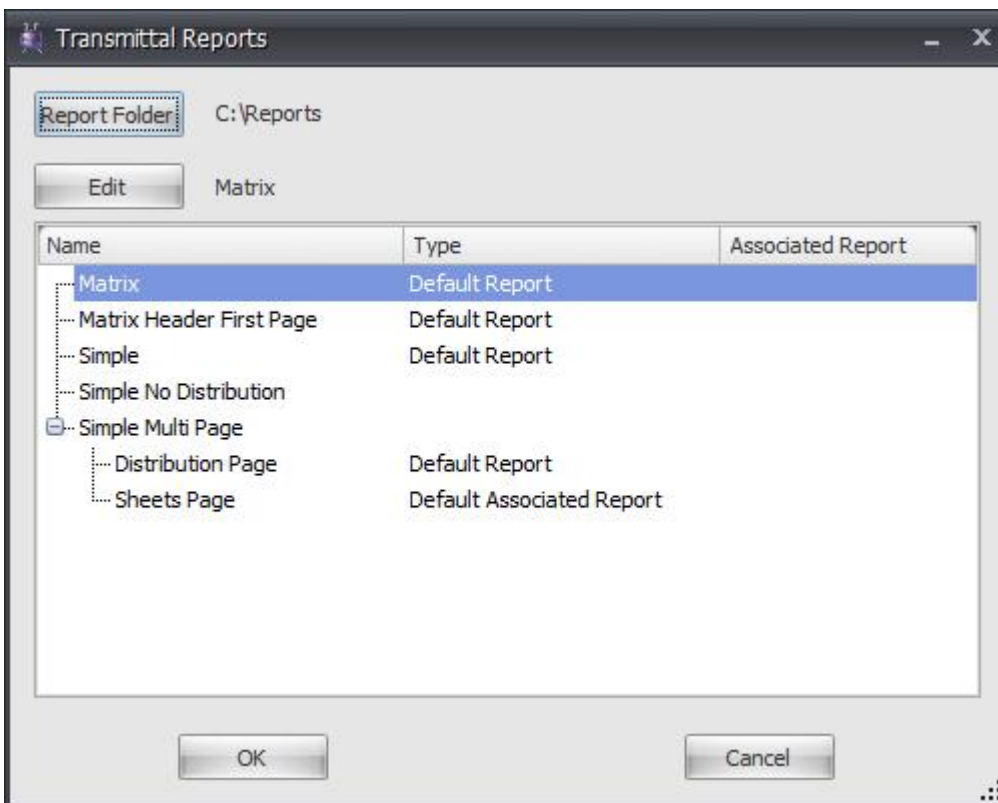
Drawing Manager Report Designer

The Report Designer provides an interface for users to customise Drawing Manager transmittal reports. Customisation can include fonts, text content based upon field values, modifications to data fields and images.

The Report Designer is accessed by selecting the Edit button on the Transmittal Report window, which is displayed by selecting the Transmittals ribbon panel button.

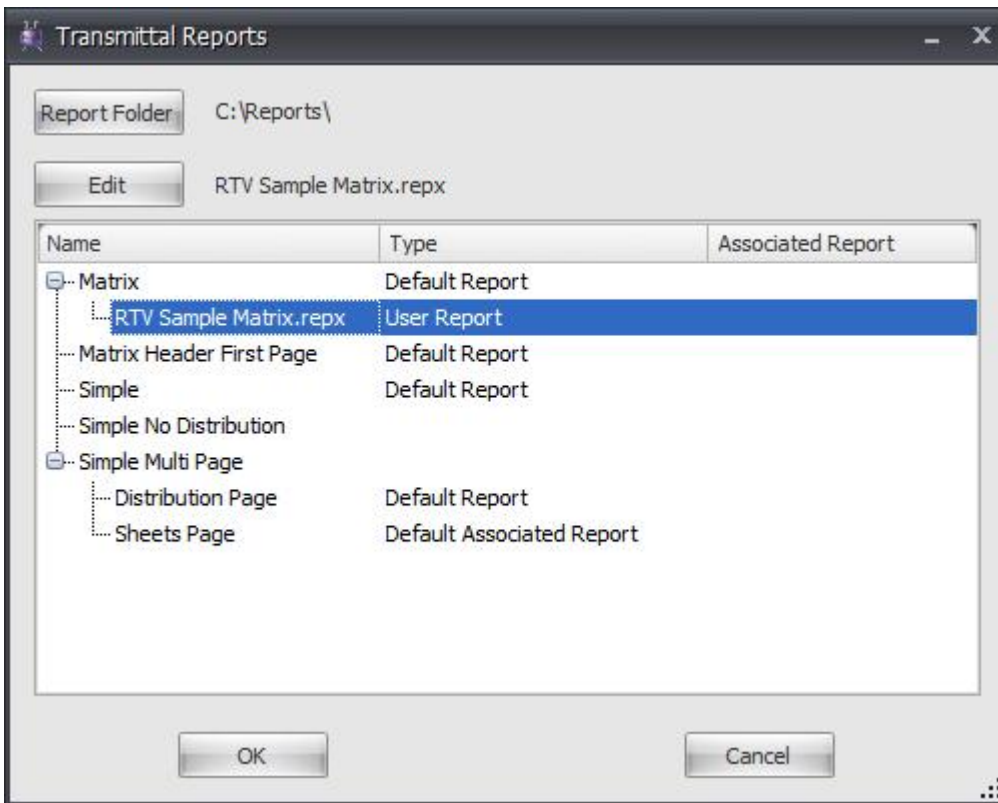


There are 5 main default reports (templates) that custom reports are initial based upon. Highlight the required main report and then select the Edit button to load the Report Designer application. Please wait while the Report Designer loads which could be a several seconds depending the computer.



Saved Reports

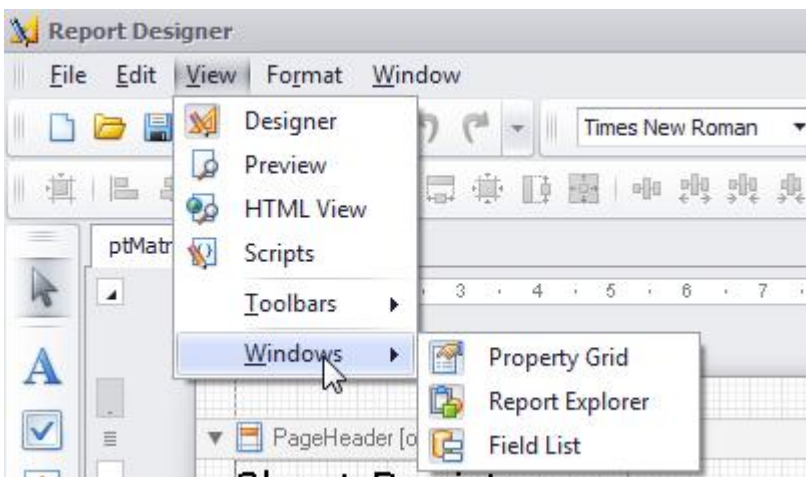
Once you have completed changes to the report, SAVE and name the report file (.repx) to the Drawing Manager transmittal report folder. When you exit the Report Designer the Transmittal Report window will refresh and the custom report is grouped under the default report it was initially based upon.



Report Designer Windows

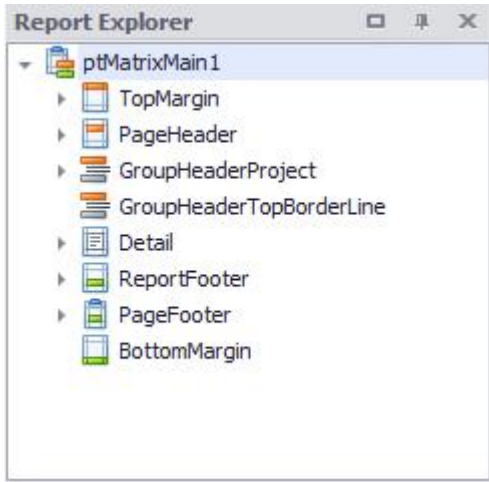
There are 3 main Report Designer windows: Report Explorer, Field List and Property Grid.

If any of these windows are closed use the View ->Windows menu option to display the required window.



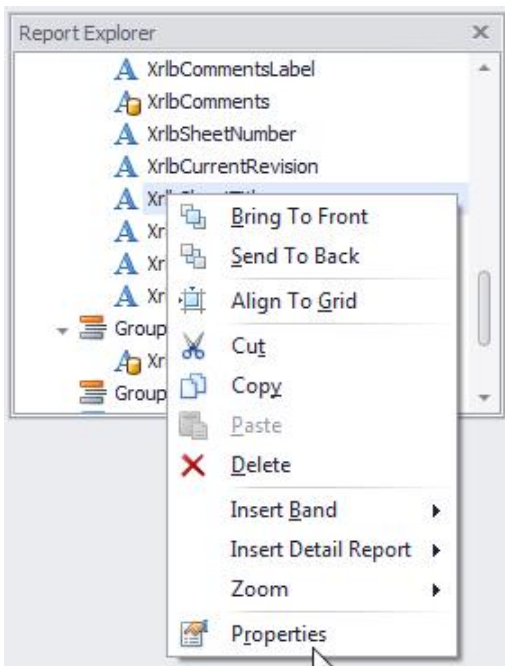
Report Explorer

The Report Explorer provides easy navigation through report elements. You can use it when building a report to quickly access all report elements and their properties, and to see the whole report's structure.



The Report Explorer displays a report's structure as a tree. Report elements in the tree are displayed in a vertical order, which corresponds to their vertical position in a report. When you choose an element in the Report Explorer tree, the selected report element receives focus, so you can edit this element and its properties.

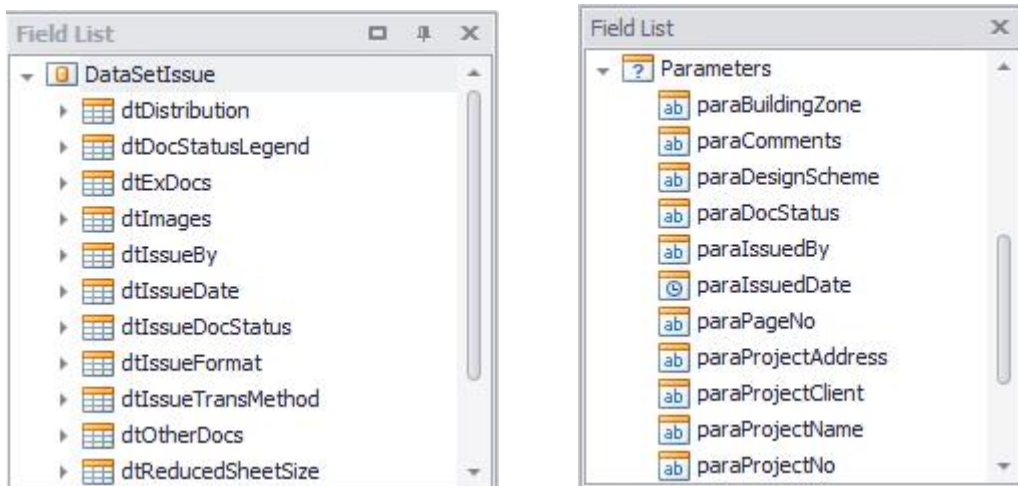
Any item in the Report Explorer can be right clicked to invoke the context menu for this report element. An example of this menu is shown in the image below.



If there are any data-bound controls in a report, they will be marked in the Report Explorer with the yellow database icon.

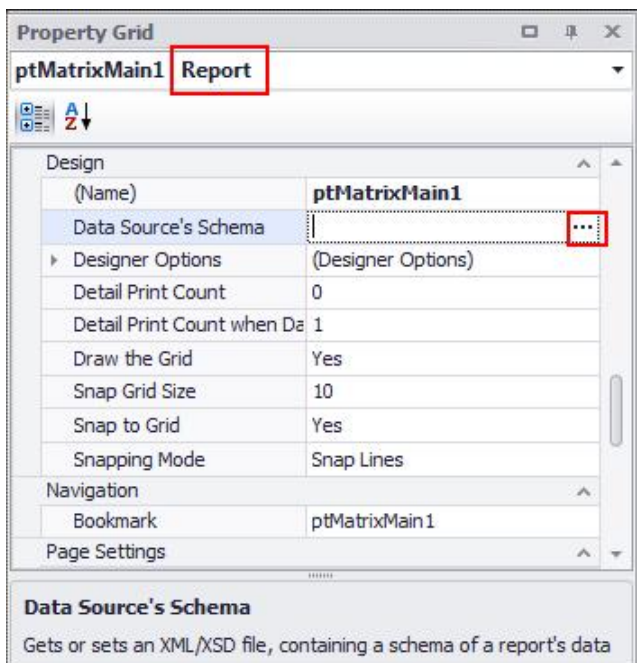
Field List

The Field list displays the schema of the data source which is currently bound to a report. Also, this window may be used to bind existing report controls to data, or to create new bound report controls. To do this, simply click the desired field item in the Field List, and then drag and drop it onto the report band, or a bindable existing report control. The Field List also displays predefined Transmittal parameters.



When a user defined report (.repx file) is opened in the Report Designer the Field List window will not be shown. To associate main Field List with a user defined report the following procedure is require:

In the Properties Grid window select the *Report* element from the dropdown list as shown in the image below.



Scroll down the Properties Grid to the section Design.

In the Design section, select the Data Source's Schema button (...) to define the schema file.

The ADO.NET (XML) Dataset window will display, select the XML/XSD file button, change the file type to XML Schema files (*.xsd), then select the DataSetIssue.xsd file, select Open, and finally OK to close the ADO.NET (XML) Dataset form.

The Field List is now updated with the Drawing Manager data fields and parameters.

Property Grid

The Property Grid displays the properties of the selected report element. Use it to change an element's property, e.g. font, colour, image name etc.

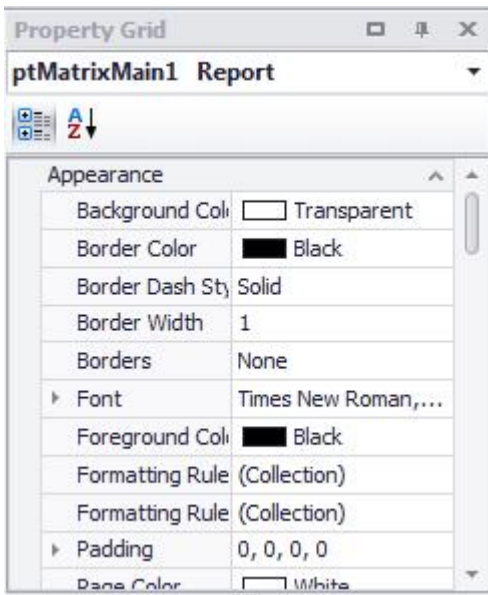


Table Column Modifications

Column Width:

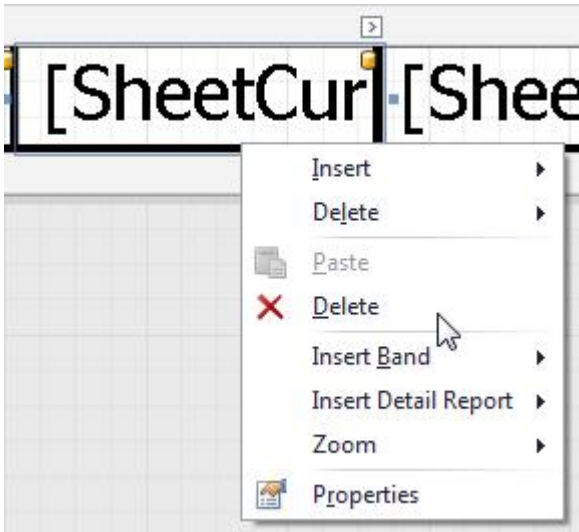
To modify a column, first select the column to display the resize blue grip boxes and smart tag as shown in the image below.



Select the appropriate grip box and resize the column as required. During the resizing, purple alignment guidelines may appear to assist with aligning the column width to existing report elements.

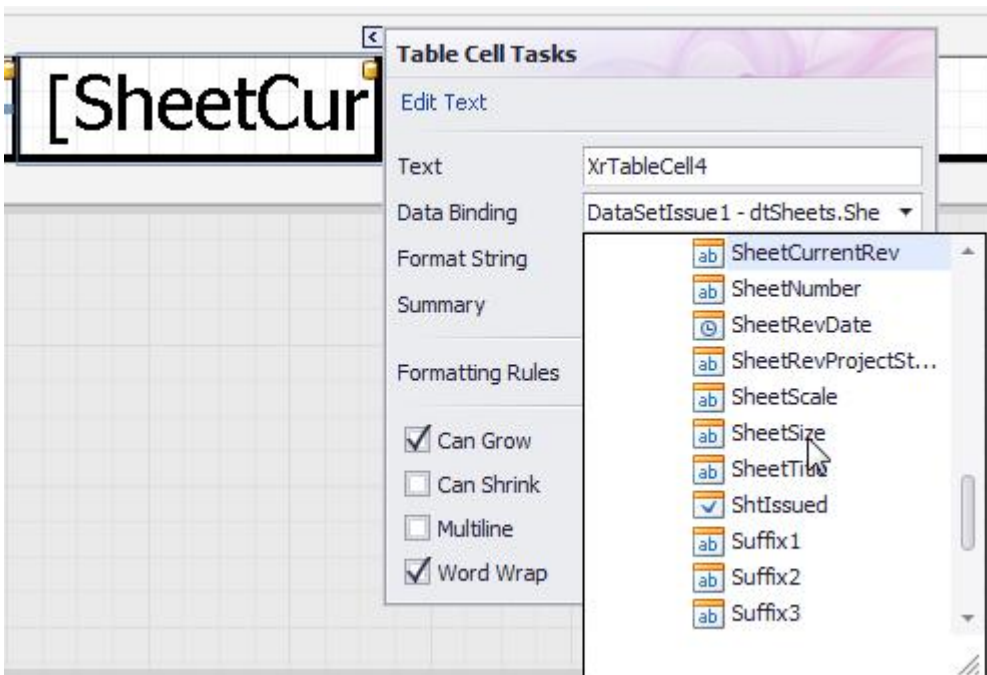
Column Removal:

If a column is not required, select the column, right click and select Delete option from the context menu as shown in the image below.



Column Field Binding:

To change the column binding, select the column to activate the smart tag. Select the smart tag, and then select the new bound field from the Data Binding dropdown list as shown in the image below.

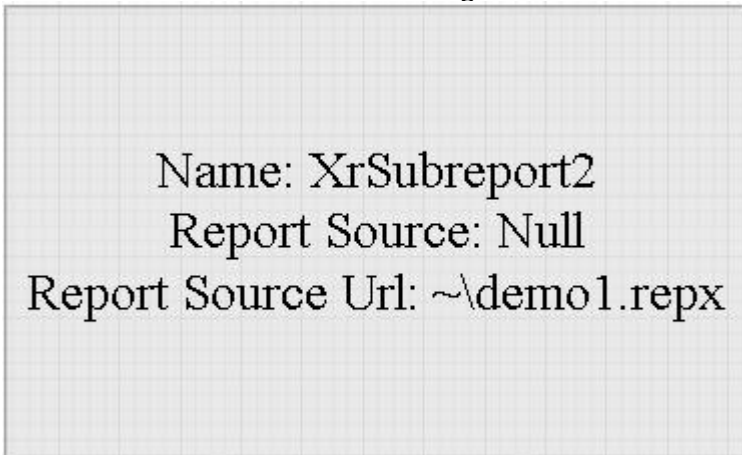


Select the smart tag again to close the smart tag menu.

Sub Reports

Double clicking on the sub report will load the sub report as another tabbed window in the Report Designer. Modify the sub report as required and when modifications have been completed SAVE and name the sub report file (.repx) to a network location where all users can access.

Switch to the main report and note the saved sub report name is now defined as the Report Source URL as shown in the image below.



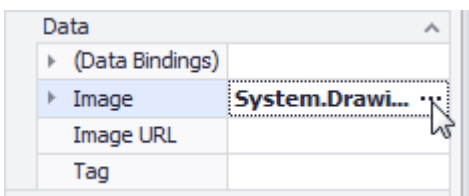
When the transmittal report is loaded it will automatically load the sub report .repx file and apply the sub report layout to the transmittal report.

Images

Drag and drop the Picture box report element from the controls toolbar onto the report.



Select the Picture box, right and select Properties from the context menu. In the Properties window select the Image button ... under the Data section as shown in the image below.



Browse and select the new image to appear on the report. Use the blue image grip boxes to resize and position the picture box control on the report.

Scripts

The report scripts page enables you to create custom functions that are assigned to report element events. The scripts page is accessed by selecting the Scripts tab at the bottom of the Report Designer.

In the Properties Grid window select the *Report* element from the dropdown list, scroll to Behaviour section and select the Script Language from the dropdown list. Scripting language can be Visual Basic, C# or JScript.net.

The following example controls the text associated with two label elements (lbGroup1 & lbGroup2) that are located in the Group Header report band.

The lbGroup1 element text is based upon the value of the first 2 characters of the data field "Prefix2".

The lbGroup2 element text is based upon the value of the first 3 characters of the data field "Prefix3".

```
Private Sub GroupHeader1_BeforePrint(ByVal sender As Object, ByVal e As
System.Drawing.Printing.PrintEventArgs)

' Example of grouping sheets by a sheet number column
' and renaming the text for the group using Select Case statement

Dim classtype As String = GetCurrentColumnValue("Prefix2").ToString.Trim
Dim building As String = GetCurrentColumnValue("Prefix3").ToString.Trim

select case classtype.substring(0,2)
case "40"
    lbGroup1.Text = "40. Sammansatt redovisning:"
case "49"
    lbGroup1.Text = "49. ÖVRIGA RITNINGAR"
end select

select case classtype
case "40.1"
    select case building.substring(0,3)
    case "120"
        lbGroup2.Text = "Planer U12"
    case "300"
        lbGroup2.Text = "Planer U3"
    case "600"
        lbGroup2.Text = "Planer U6"
    end select
case "40.2"

end select

End Sub
```

The next example sets the display text for element XrTableCell8 to blank if the field "DrawnDate" is null.

```
Private Sub XrTableCell8_BeforePrint(ByVal sender As Object, ByVal e As
System.Drawing.Printing.PrintEventArgs)
    If GetCurrentColumnValue("DrawnDate") Is DBNull.Value= True Then
        XrTableCell8.Text = ""
    End If
End Sub
```

Important

Always select the Validate button to confirmation that the code is validated before saving the report.