

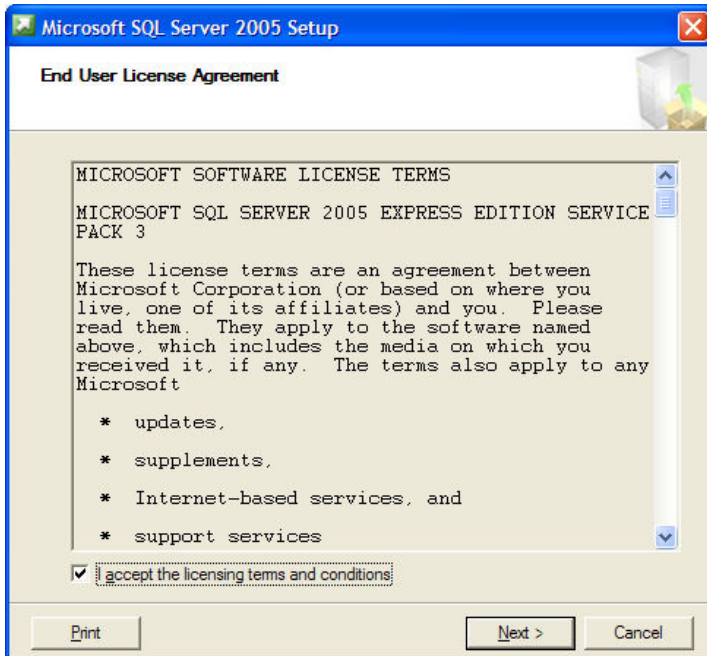
SQL Server 2005 Express Edition Installation

If you don't already have SQL Server 2005 or SQL Server 2005 Express Edition operating within your organization then install SQL Server 2005 Express Edition.

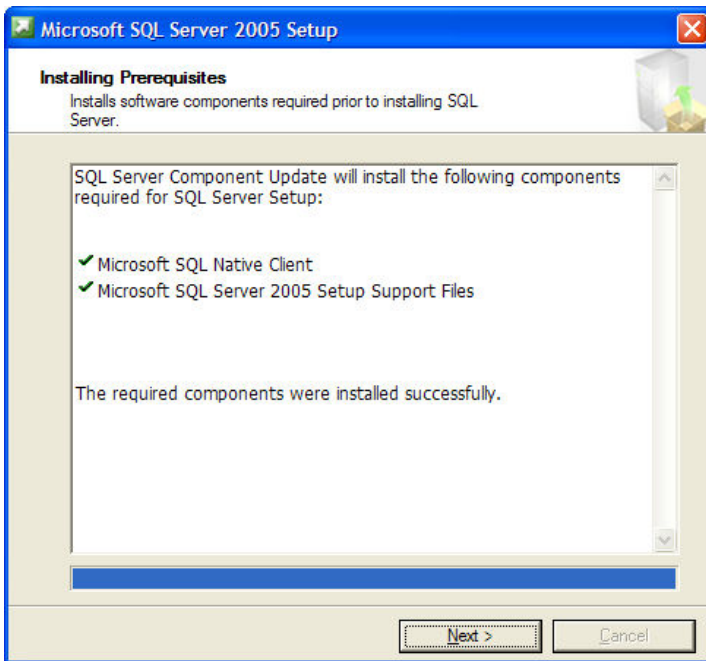
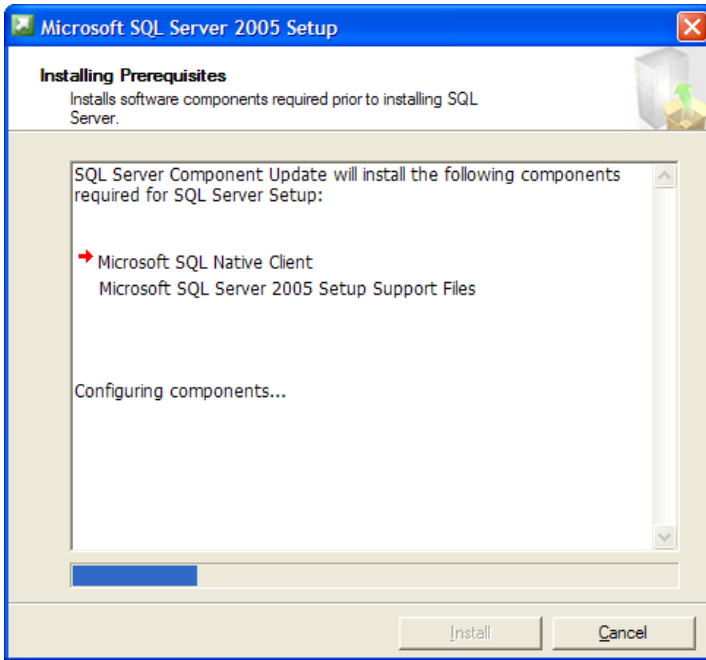
Consult with your organization's IT department or IT service provider to determine which server is suitable for the installation.

Download SQL Server 2005 Express Edition
<http://www.revittv.com/SQLEXP2005/SQLEXP32.exe>

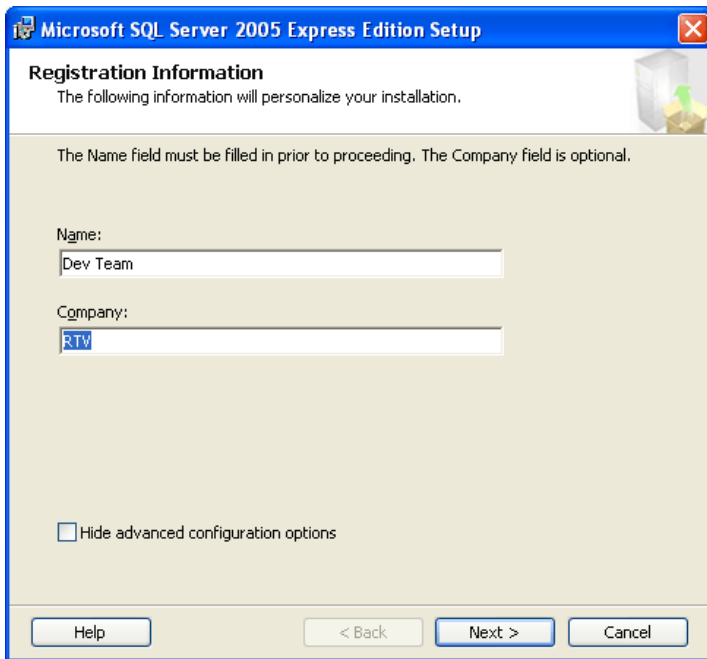
Once downloaded run file SQLEXP32.exe



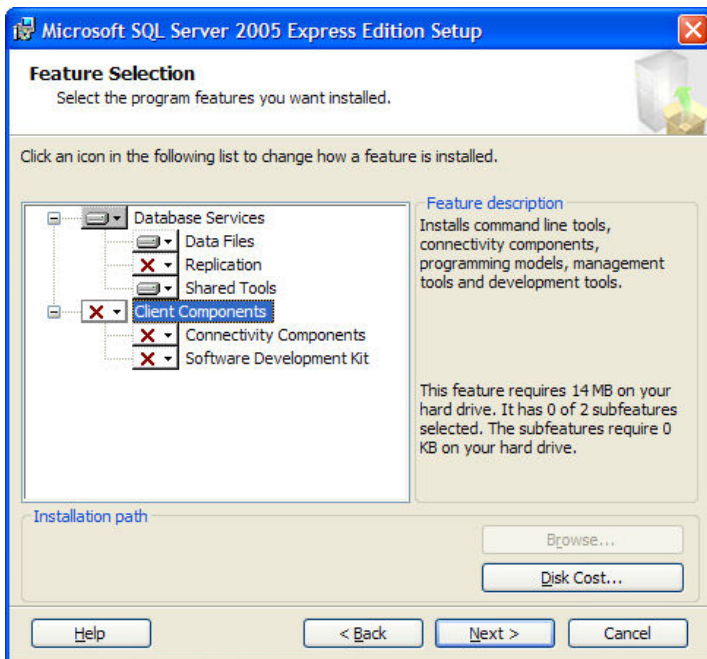
Accept the licensing term and select Next button to continue.



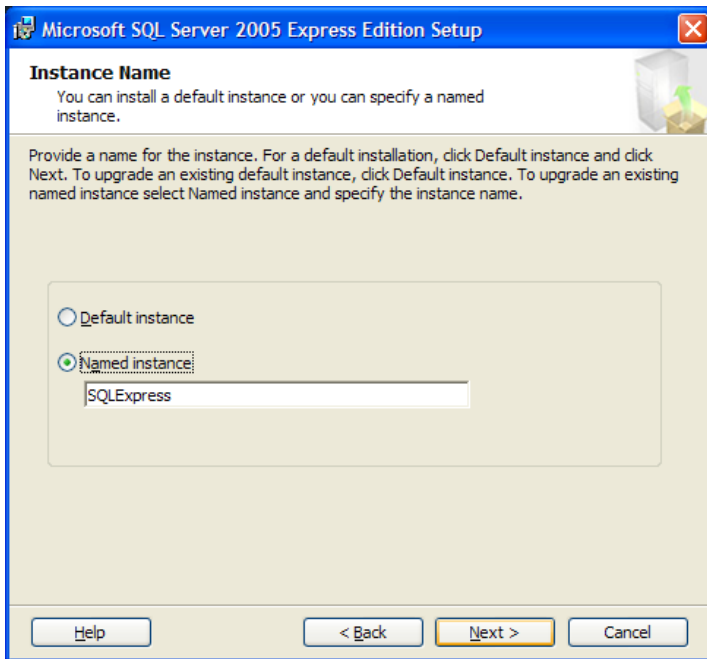
After installation of prerequisites select Next button to continue.



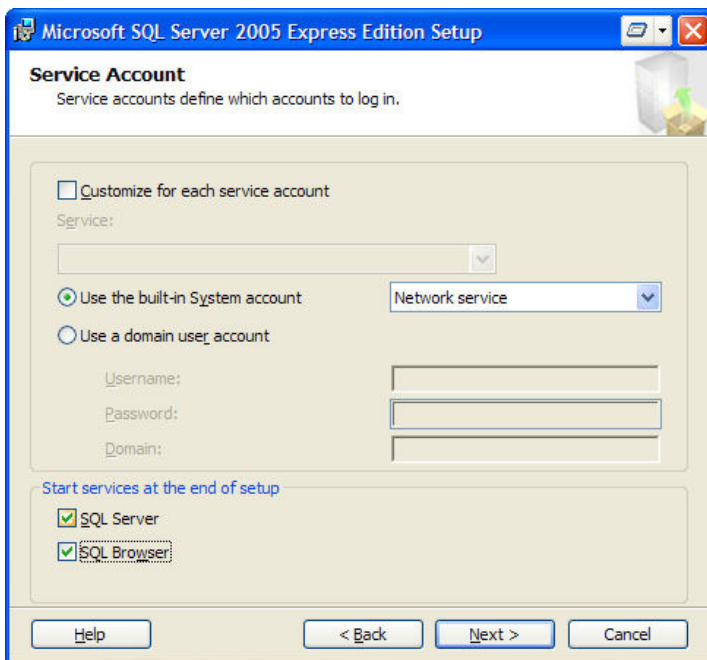
Complete Name and Company details and **uncheck** the checkbox to show advanced configuration options. Select Next button to continue.



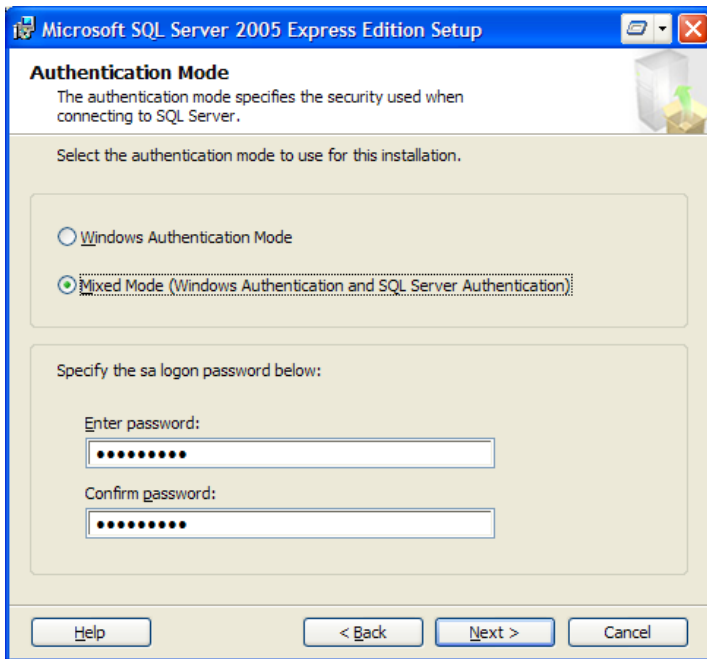
Accept the default selection and select Next button to continue.



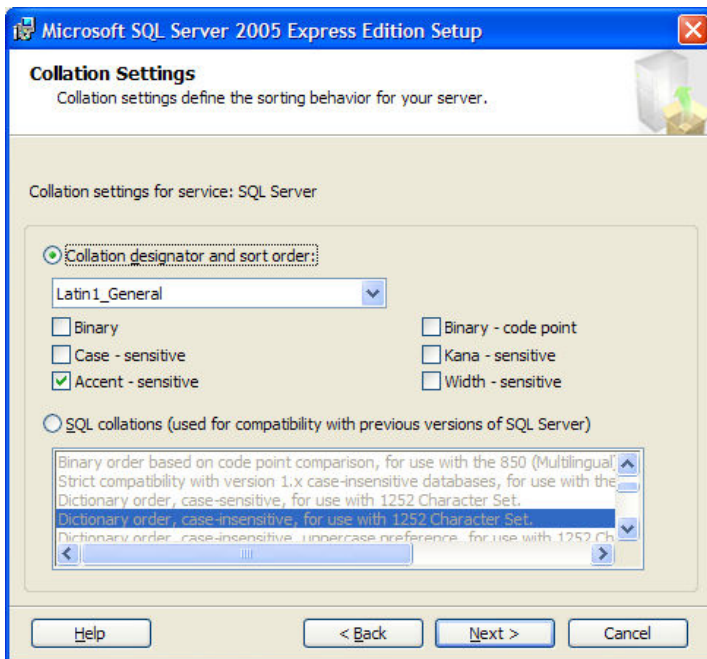
Specify the Instance Name or accept the default name, then select the Next button to continue.



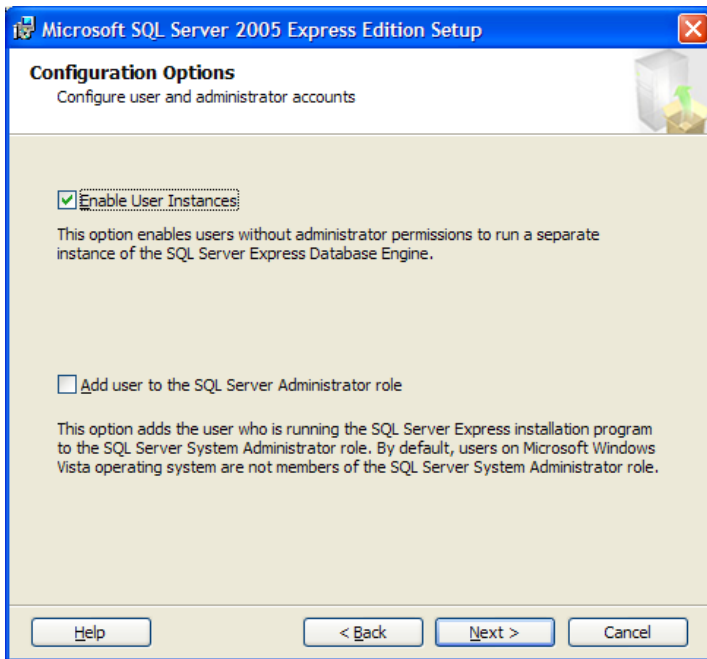
Accept the default settings for the service account, or define a special domain user account to manage the SQL Server and SQL Browser services. Select the Next button to continue.



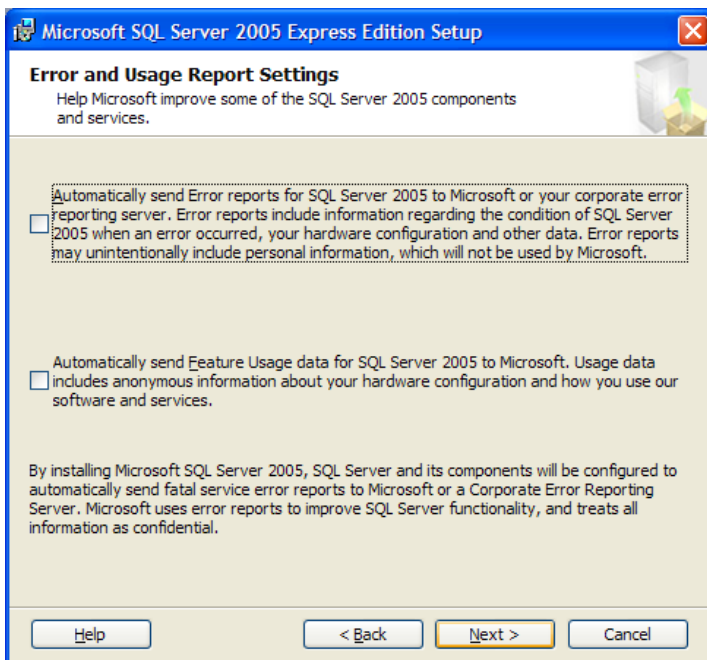
Select **Mixed Mode** and specify a password for the SQL Server System Administrator "sa". Do not forget the defined password. Select Next button to continue.



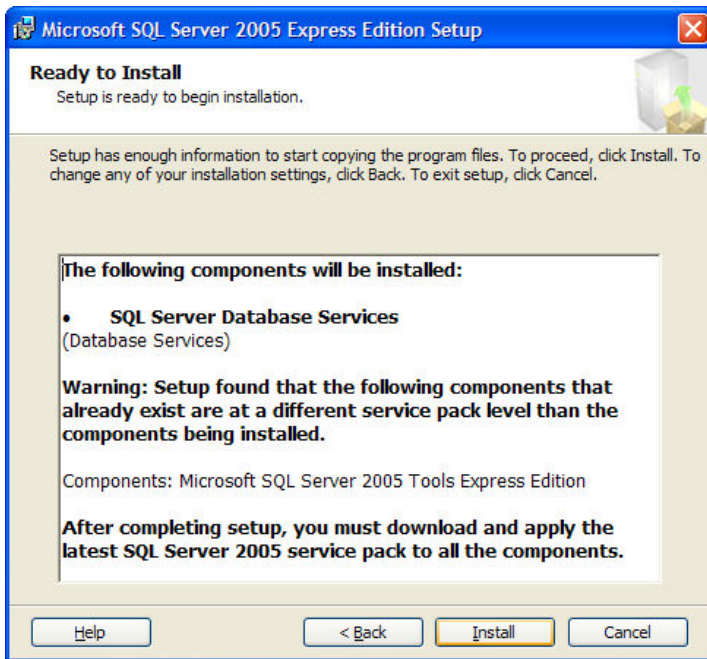
Accept the default collation settings and select Next button to continue.



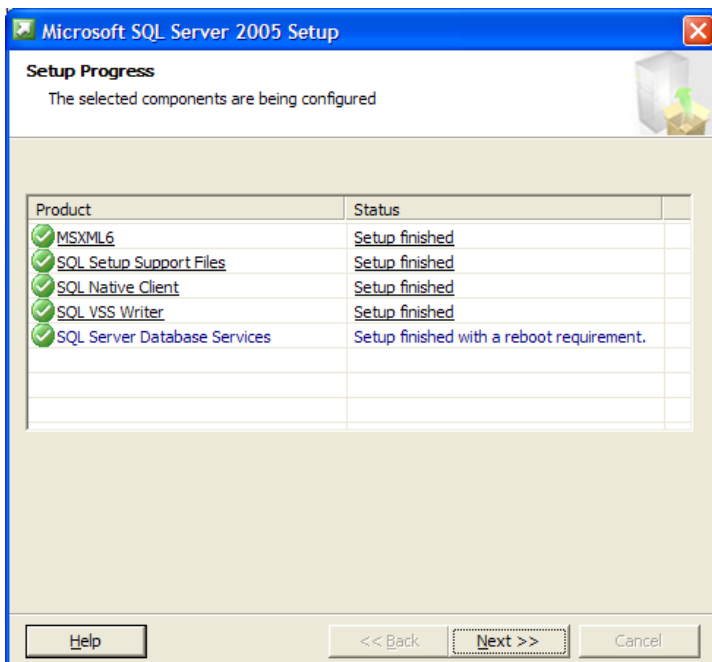
Accept the default user and administrator accounts settings and select Next button to continue.



Accept the default error and usage report settings and select Next button to continue.



Select Install button to start installation of SQL Server 2005 Express.



Note if a server reboot is required. Select Next button to continue.



Installation is now completed, but a reboot of the server maybe required.

Error during Installation SQL Server 2005 Express Edition.

The following error may occur when installing SQL Server 2005 Express Edition on a workstation (non server):

Error Install MS SQL Server Express in Windows XP SP3 / MSXML6 SP2

Uninstall MSXML6 SP2, by using Windows Installer Cleanup Utility which can be downloaded from <http://download.microsoft.com/download/e/9/d/e9d80355-7ab4-45b8-80e8-983a48d5e1bd/msicuu2.exe>

Then install SQL Server Express edition just like usual.

SQL Server Surface Area Configuration

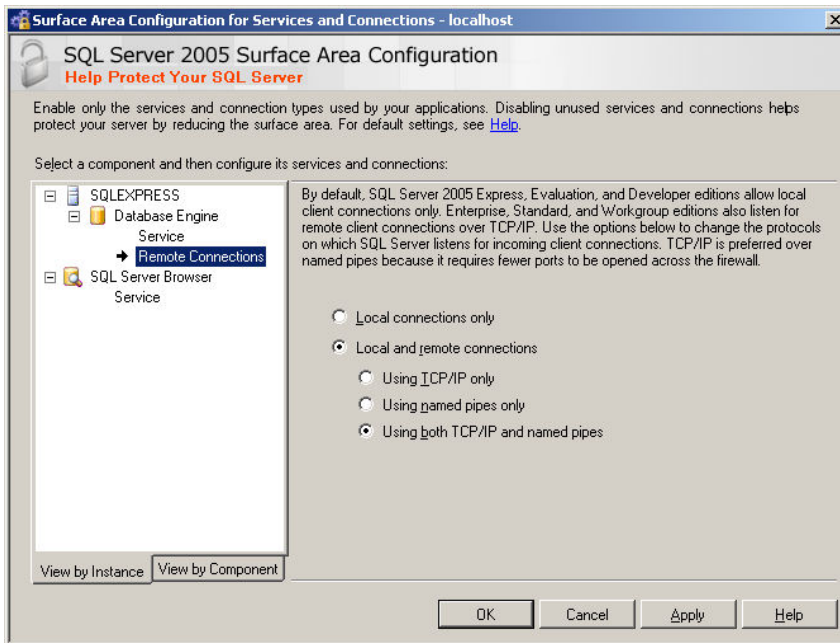
Once SQL Server 2005 Express Edition has been installed configure the services using SQL Server Surface Area Configuration tool.

Start Menu > All Programs > Microsoft SQL Server 2005 > Configuration Tools > SQL Server Surface Area Configuration.



Select Surface Area Configuration for Services and Connections.

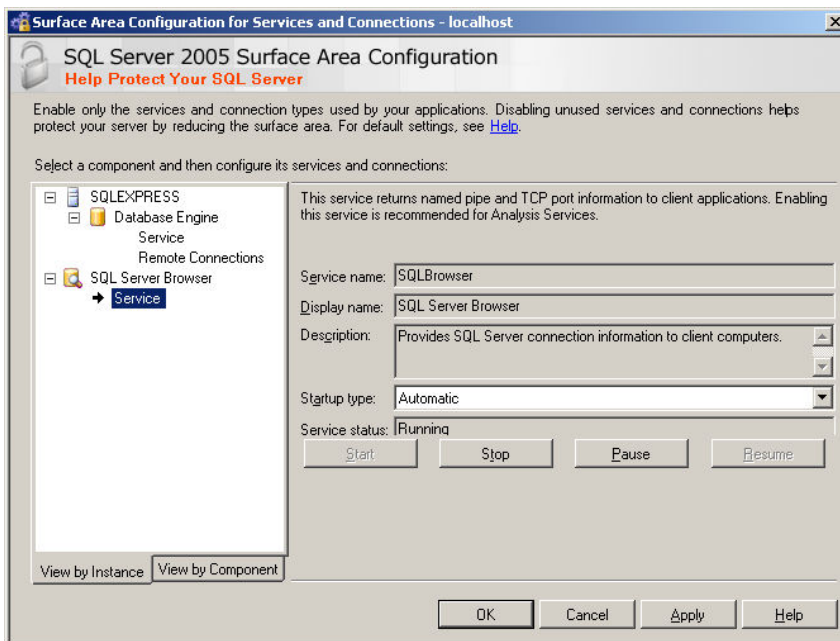
Expand the Database Engine branch and select Remote Connections.



The select the following:

- Local & remote connections
- Using both RCP/IP and named pipes

Expand the SQL Server Browser branch and select Service.



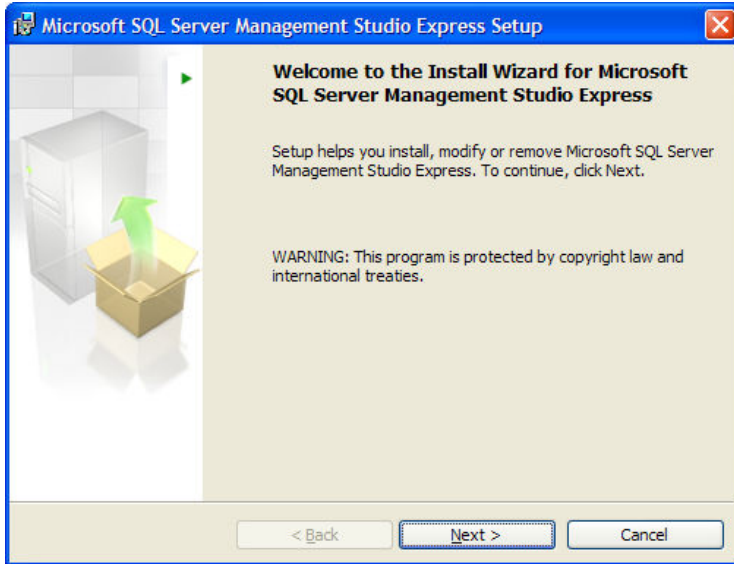
Define Startup type as Automatic and select Start button. Select OK button to apply changes and exit.

Initial Database Management and Setup

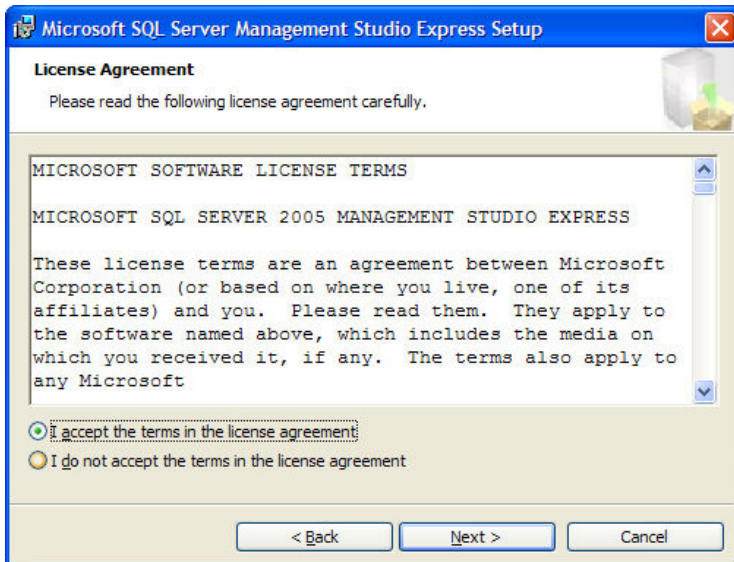
Download and install SQL SERVER Management Studio Express onto the server or the user's computer who will manage the RevitTV Drawing Manager SQL databases.

http://www.revittv.com/SQLEXPR2005/SQL_Server2005_SSMSEE.msi.

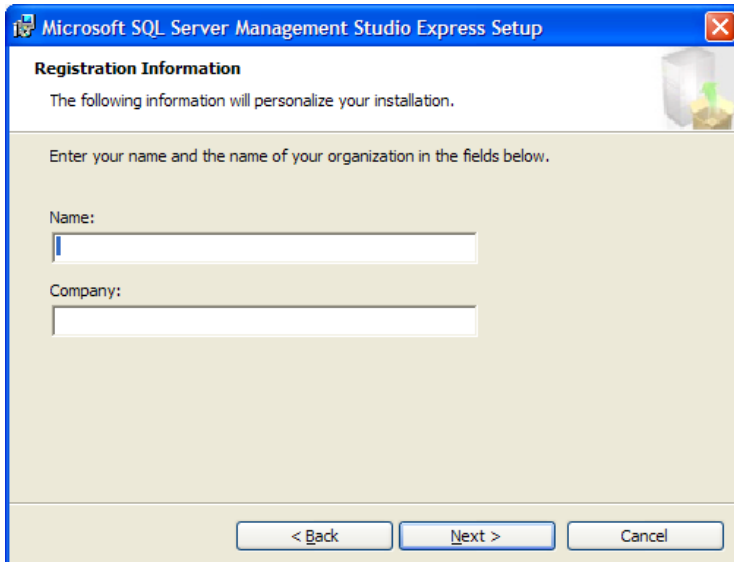
Run file SQLServer2005_SSMSEE.msi



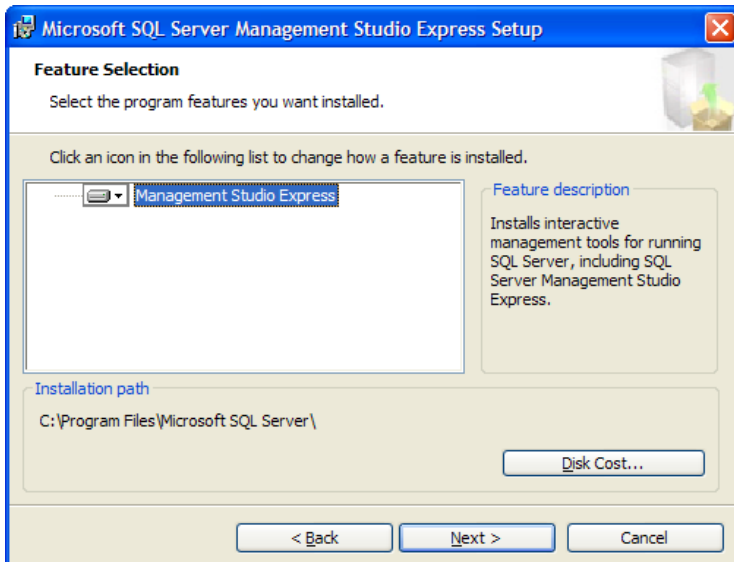
Select Next button to continue.



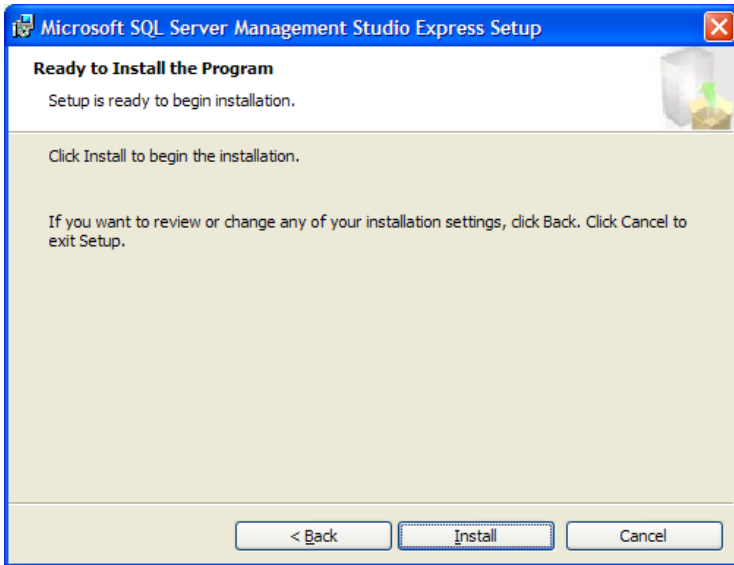
Accept the license agreement and select Next button to continue.



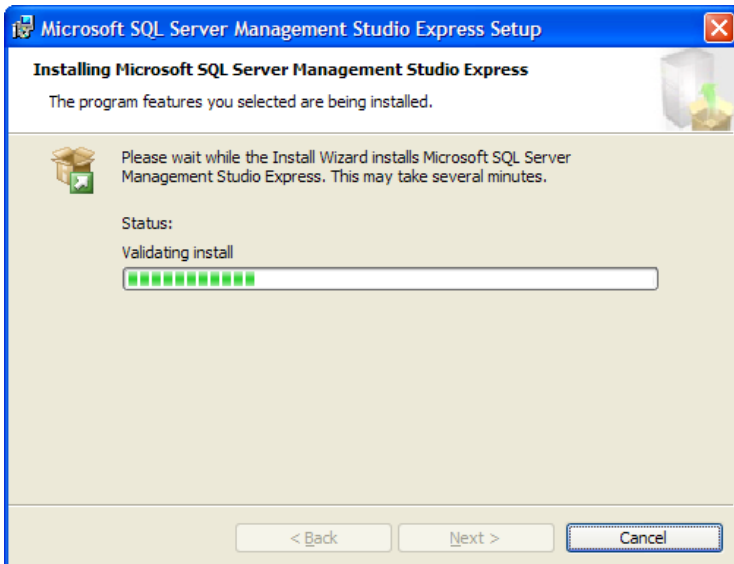
Complete Name and Company details select Next button to continue.



Select Next button to continue.



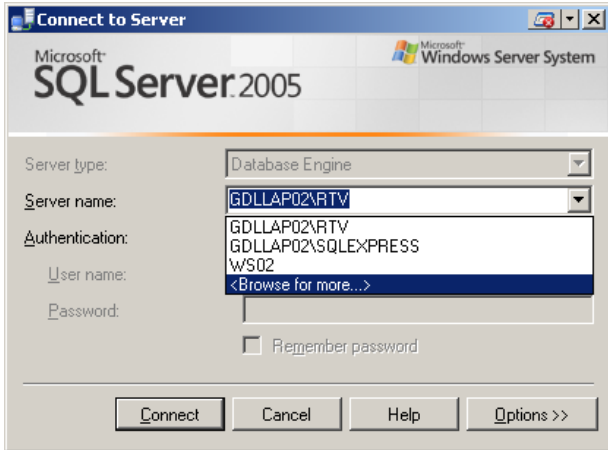
Select Install button to begin installation.



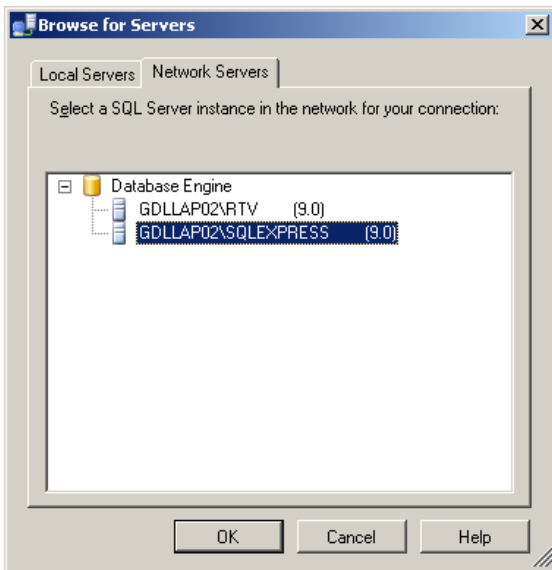
Once installation has completed run SQL Server Management Studio Express.

Start Menu > All Programs > Microsoft SQL Server 2005 > SQL Server Management Studio Express

The SQL server may not be shown in the server name list. Select the option <Browse for more...> from the server name list.



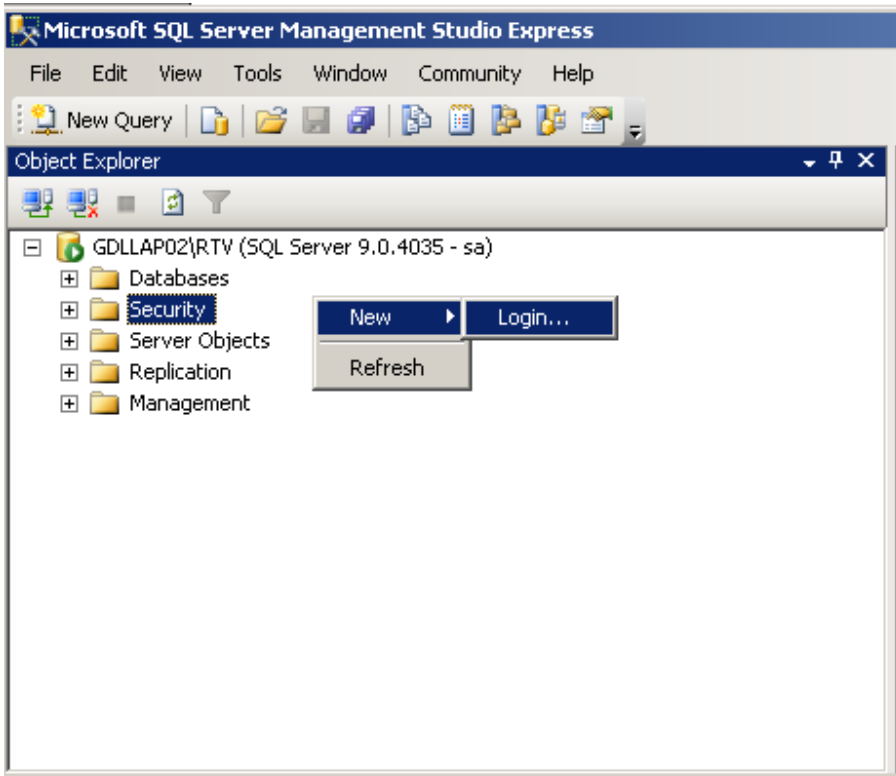
Select the Network Servers tab and wait for the list to populate.



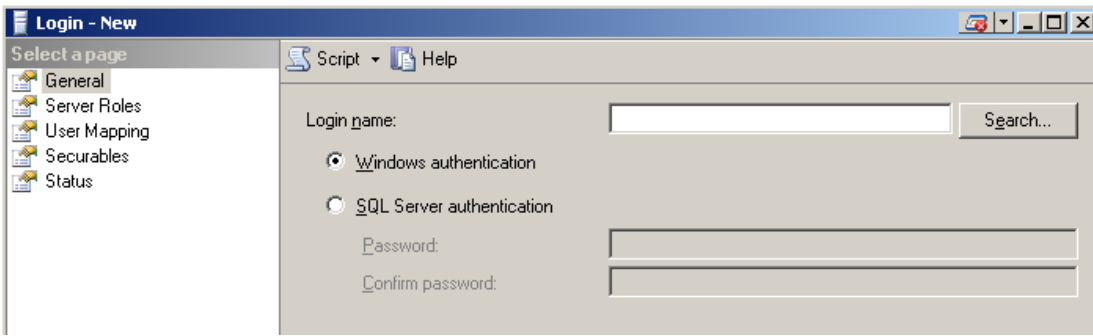
Expand the Database Engine tree, and highlight the SQL server / instance to connect. Select OK button to accept selection.



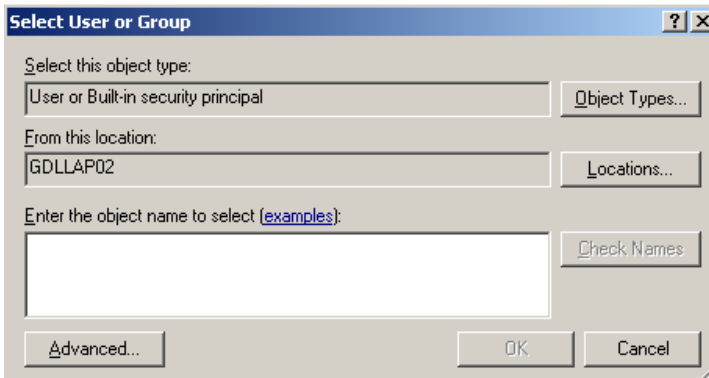
Select SQL Server Authentication mode and login using the System Administrator (sa) account and password previously defined in the SQL Server 2005 Express installation. Select Connect button to continue.



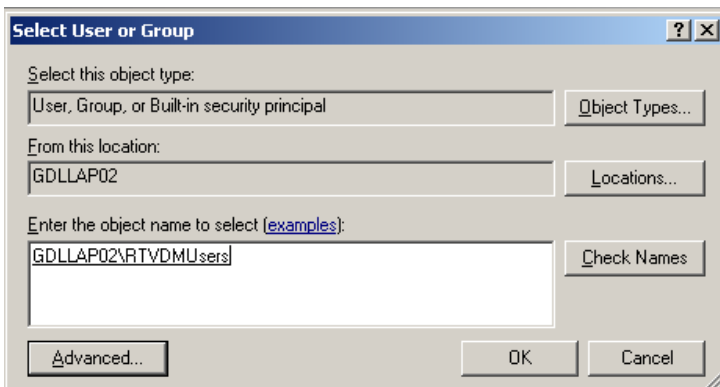
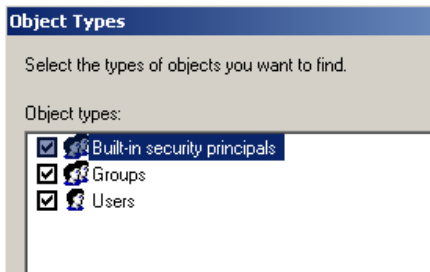
Right click over the Security folder and select New > Login...

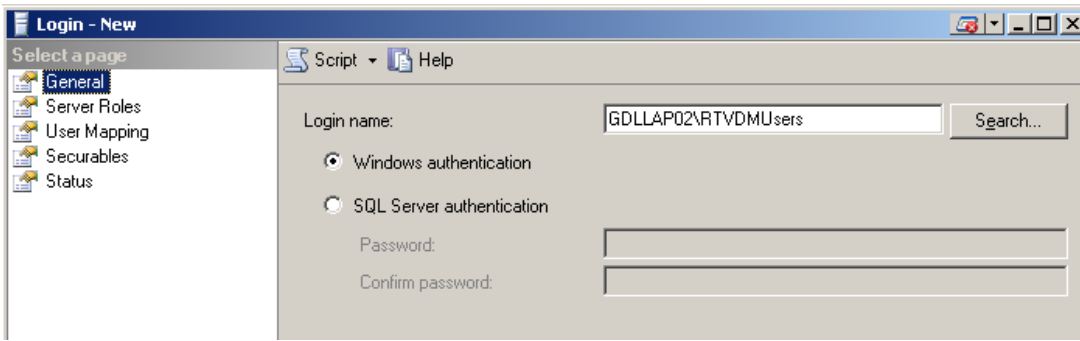


Select Search... button and define the domain user or group that is permitted access to create and modify the Drawing Manager SQL databases.

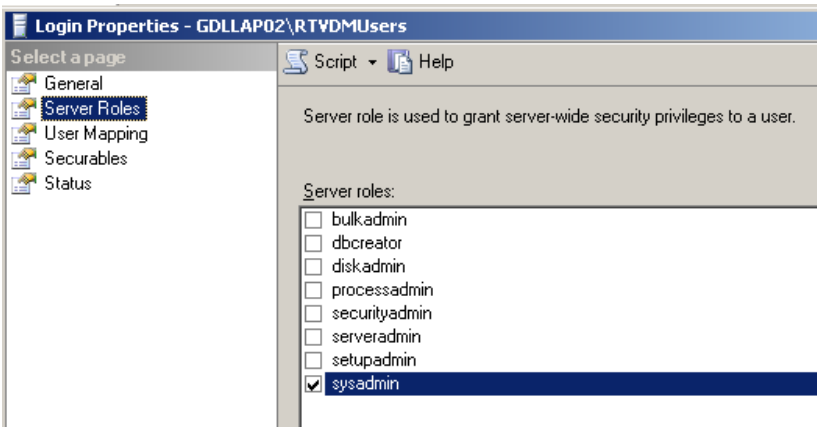


To define a group select the Object Types... button and select the Groups option.





Select Server Roles page and check the 'sysadmin' option.



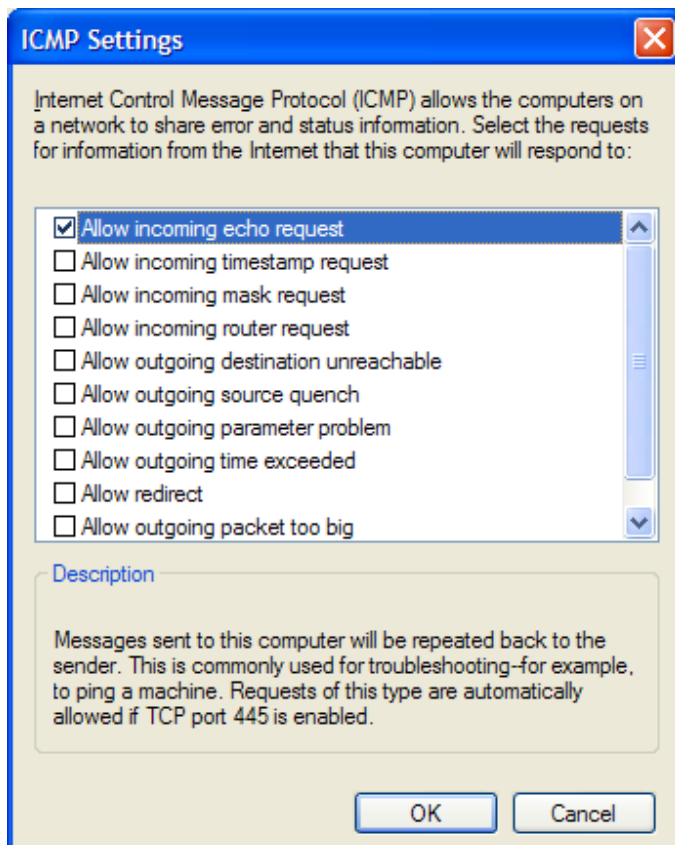
Select OK button to define the new login. Repeat the above or all users that are permitted to create Drawing Manager databases if you haven't defined a domain group.

SQL Server 2005 Express Edition Firewall Exception Settings

Generally the following is only required if SQL Server 2005 Express Edition has been installed onto a computer/workstation (non server) with XP Pro operating system.

Enable ping in Windows Firewall

1. Open the **Control Panel** (from the **Start** menu. Choose **Control Panel**; or **Settings** and then **Control Panel**).
2. Open **Windows Firewall** (click **Network and Internet Connections** then **Windows Firewall**; or double-click **Windows Firewall**).
3. On the **General** tab of the **Windows Firewall** dialogue box. Make sure that the **On (recommended)** radio button is selected.
4. Click the **Advanced** tab.
5. In the **ICMP** box click the **Settings...** button.
6. Tick the **Allow incoming echo request** box.

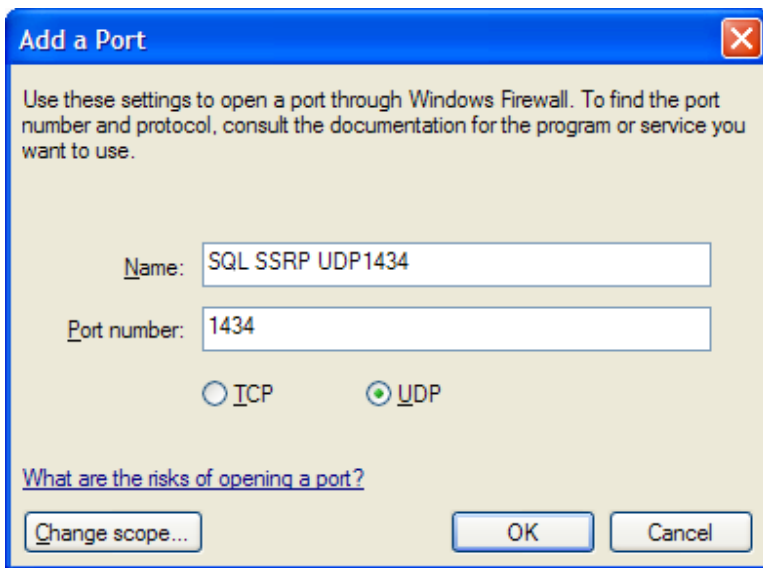


7. Click on **OK** and then **OK** again.
8. Close the **Control Panel**.

From a client computer make sure you can ping the SQL Server computer, to verify DNS settings on client computer are correct.

Add UDP 1434 Exception

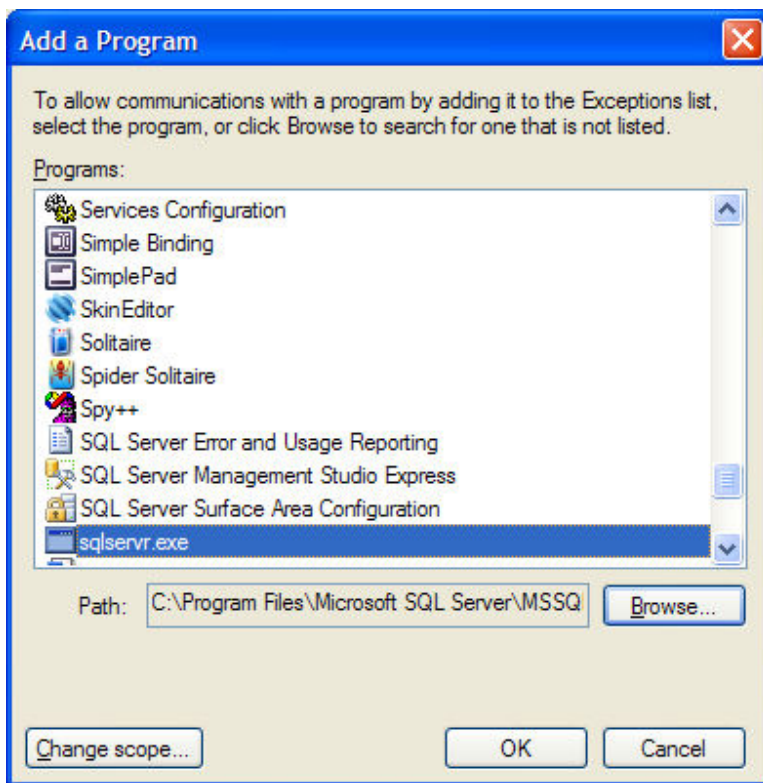
1. Open the **Control Panel** (from the **Start** menu. Choose **Control Panel**; or **Settings** and then **Control Panel**).
2. Open **Windows Firewall** (click **Network and Internet Connections** then **Windows Firewall**; or double-click **Windows Firewall**).
3. On the **General** tab of the **Windows Firewall** dialogue box. Make sure that the **On (recommended)** radio button is selected.
4. Click the **Exceptions** tab.
5. Enter a **Name**, e.g. SQL SSRP UDP 1434
6. Enter **1434** in the Port number edit box.
7. Select **UDP** radio button.



9. Click on **OK** and then **OK** again.
10. Close the **Control Panel**.

Add SQLServr.exe Exception

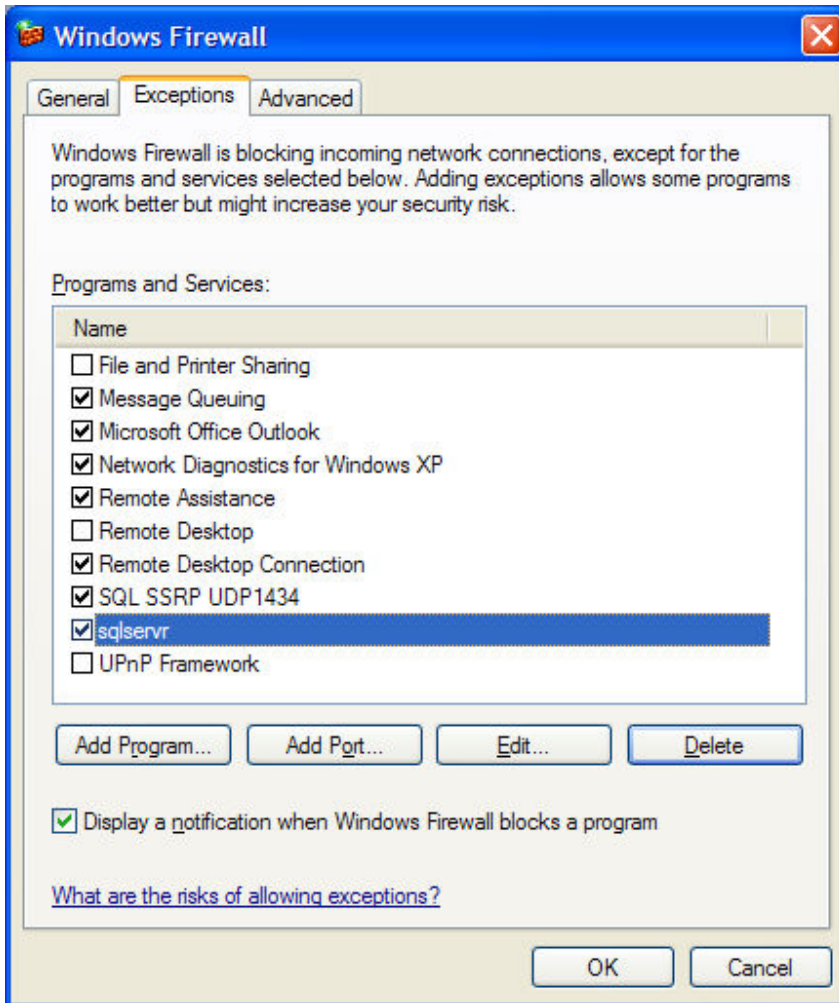
1. Open the **Control Panel** (from the **Start** menu. Choose **Control Panel**; or **Settings** and then **Control Panel**).
2. Open **Windows Firewall** (click **Network and Internet Connections** then **Windows Firewall**; or double-click **Windows Firewall**).
3. On the **General** tab of the **Windows Firewall** dialogue box. Make sure that the **On (recommended)** radio button is selected.
4. Click the **Exceptions** tab.
5. Click the **Add Program...** button.
6. Click the **Browse...** button.
7. Browse and select the file SQLSERVER.EXE located in the SQL Express BINN folder; C:\Program Files\Microsoft SQL Server\MSSQL.1\MSSQL\Binn



8. Click on **OK** and then **OK** again.
9. Close the **Control Panel**.

Summary of Exceptions

1. ICMP – ping
2. UDP Port 1434
3. SQLSERVER.exe



SQL 2005 Client Manual Setup

All client computers will require the following components installed to allow RevitTV Drawing Manager 2010 to communicate to the SQL Server. If Drawing Manager 2010 installation fails to install the SQL 2005 client files, then a manual installation will be required.

The following outline the order for a manual SQL client setup:

Step 1

Confirm Microsoft Core XML Services (MSXML) 6.0 or later is installed. This should have already been installed with Revit 2010. Otherwise it can be downloaded from the following link:

<http://www.microsoft.com/downloads/details.aspx?FamilyId=993C0BCF-3BCF-4009-BE21-27E85E1857B1&displaylang=en>

Step 2

Install Microsoft SQL Server Native Client. Select the appropriate link for your operating system.

XP Pro 32 bit (sqlncli.msi) - 3516 KB

<http://download.microsoft.com/download/f/7/4/f74cddb1-87e2-4794-9186-e3ad6bd54b41/sqlncli.msi>

XP Pro 64 bit (sqlncli_x64.msi) - 6403 KB

http://download.microsoft.com/download/f/7/4/f74cddb1-87e2-4794-9186-e3ad6bd54b41/sqlncli_x64.msi

Step 3

Install Microsoft SQL Server 2005 Management Objects Collection. Select the appropriate link for your operating system.

XP Pro 32 bit (SQLServer2005_XMO.msi) - 9529 KB

http://download.microsoft.com/download/f/7/4/f74cddb1-87e2-4794-9186-e3ad6bd54b41/SQLServer2005_XMO.msi

XP Pro 64 bit (SQLServer2005_XMO_x64.msi) - 14963 KB

http://download.microsoft.com/download/f/7/4/f74cddb1-87e2-4794-9186-e3ad6bd54b41/SQLServer2005_XMO_x64.msi

Refer to the following Microsoft reference page for additional information.

<http://www.microsoft.com/DownLoads/details.aspx?familyid=DF0BA5AA-B4BD-4705-AA0A-B477BA72A9CB&displaylang=en>

Step 4

Install RevitTV Drawing Manager 2010.